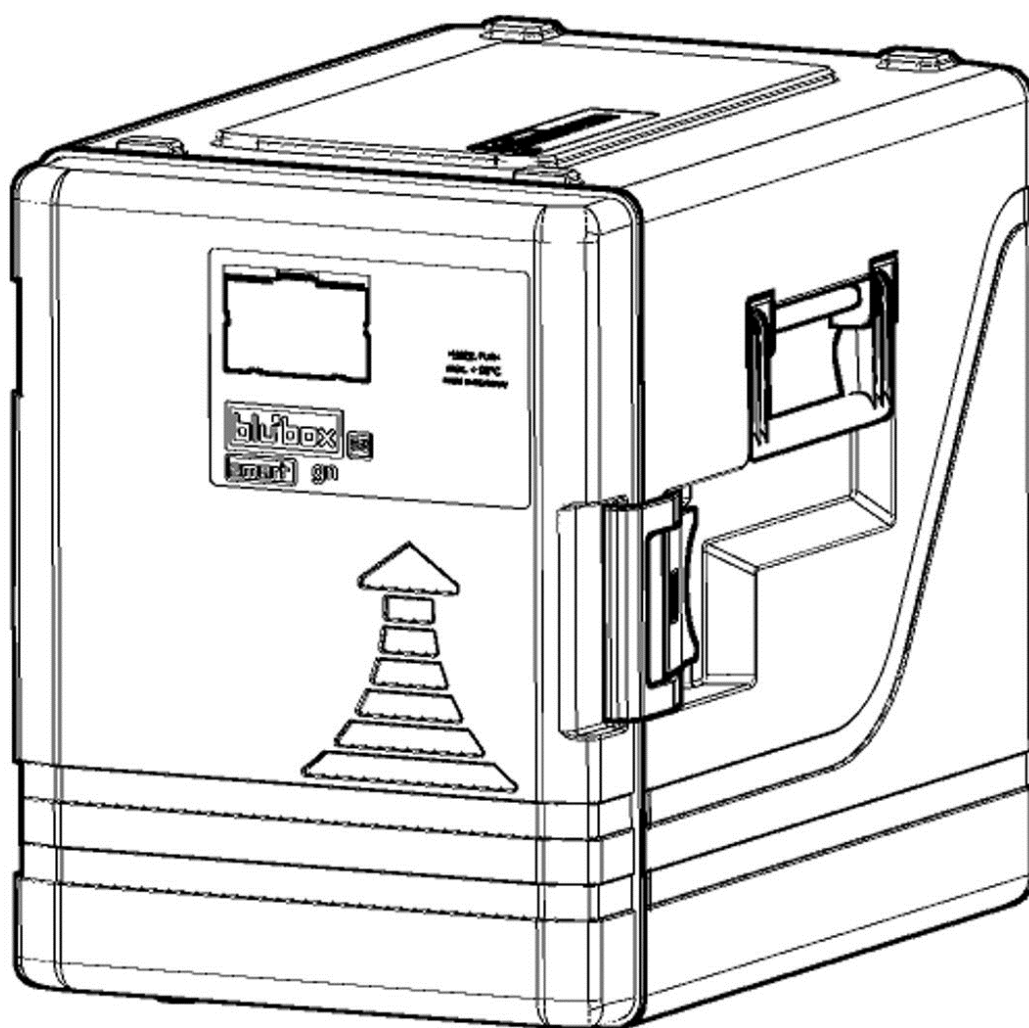




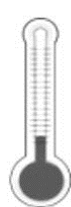
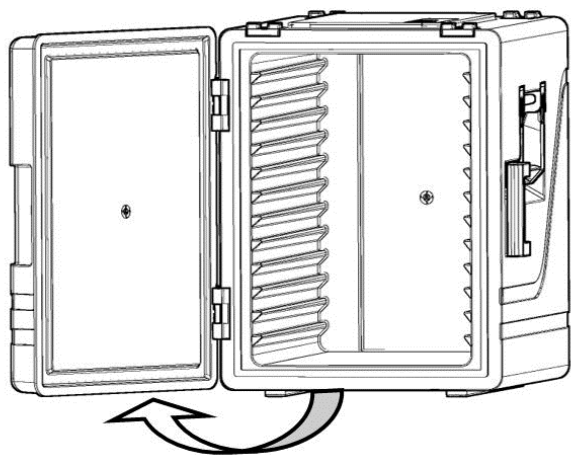
smart gn

Original – User manual Art.-no. 4000541 and 4000544

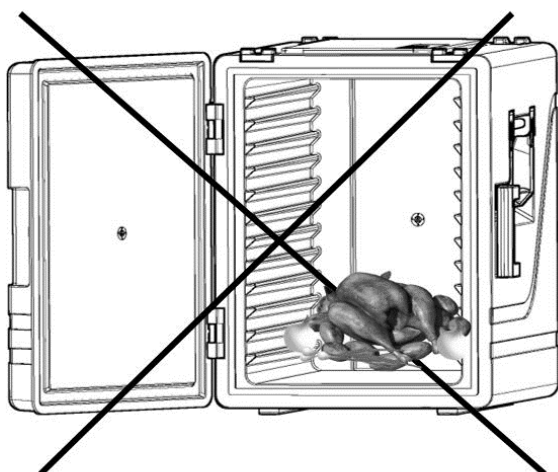


Food transport boxes for the transportation of food in warm or cold condition.

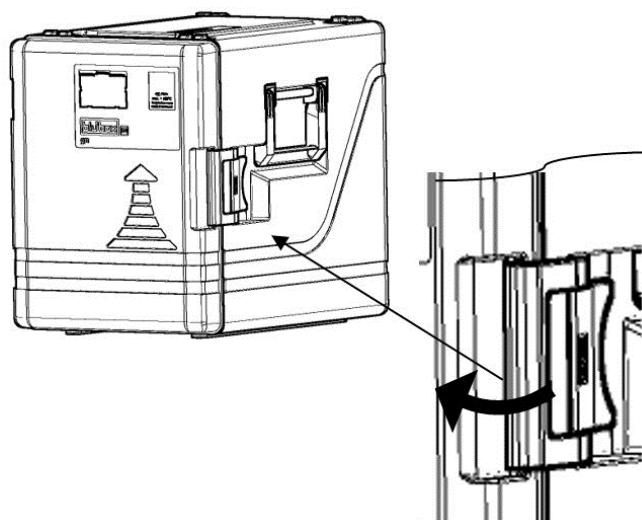
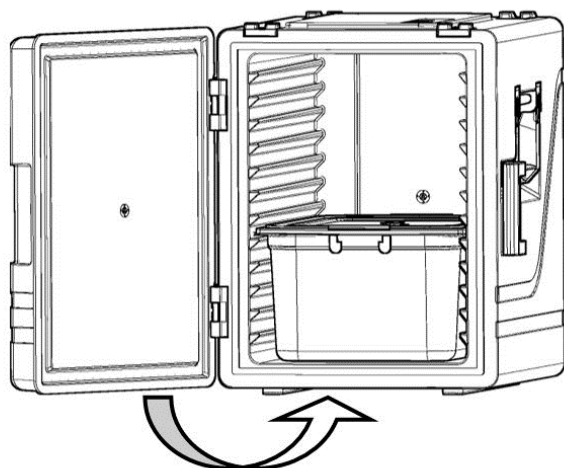
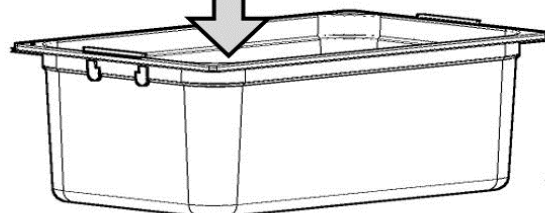
- Use and explanation



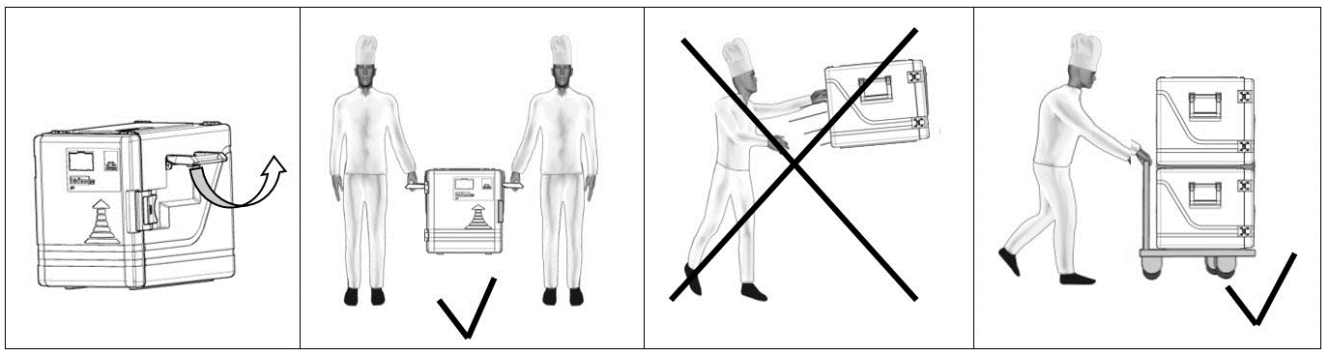
- 20°C to + 90°C



GN-container with
sealed cover



- Transportation

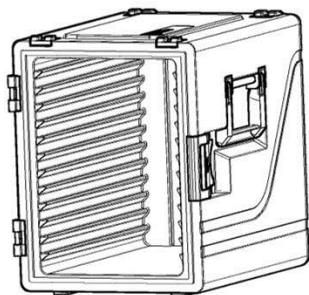
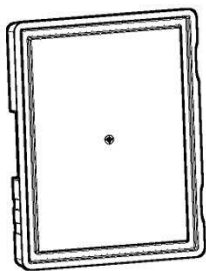


The general rules for securing loads apply to transportation in vehicles. The food transport boxes may **NOT** be transported unsecured in the vehicle.

- Cleaning



< + 90°C

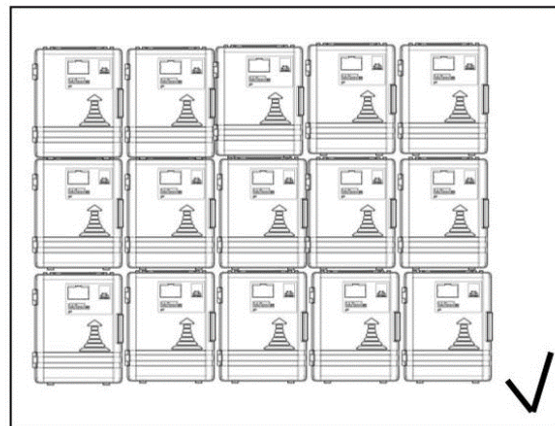
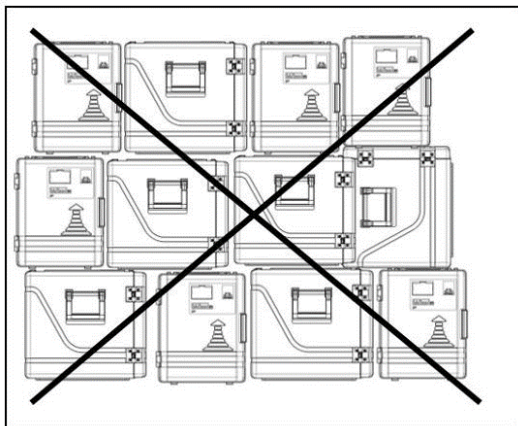


For cleaning we recommend the use of etolit 3000 or 8000.

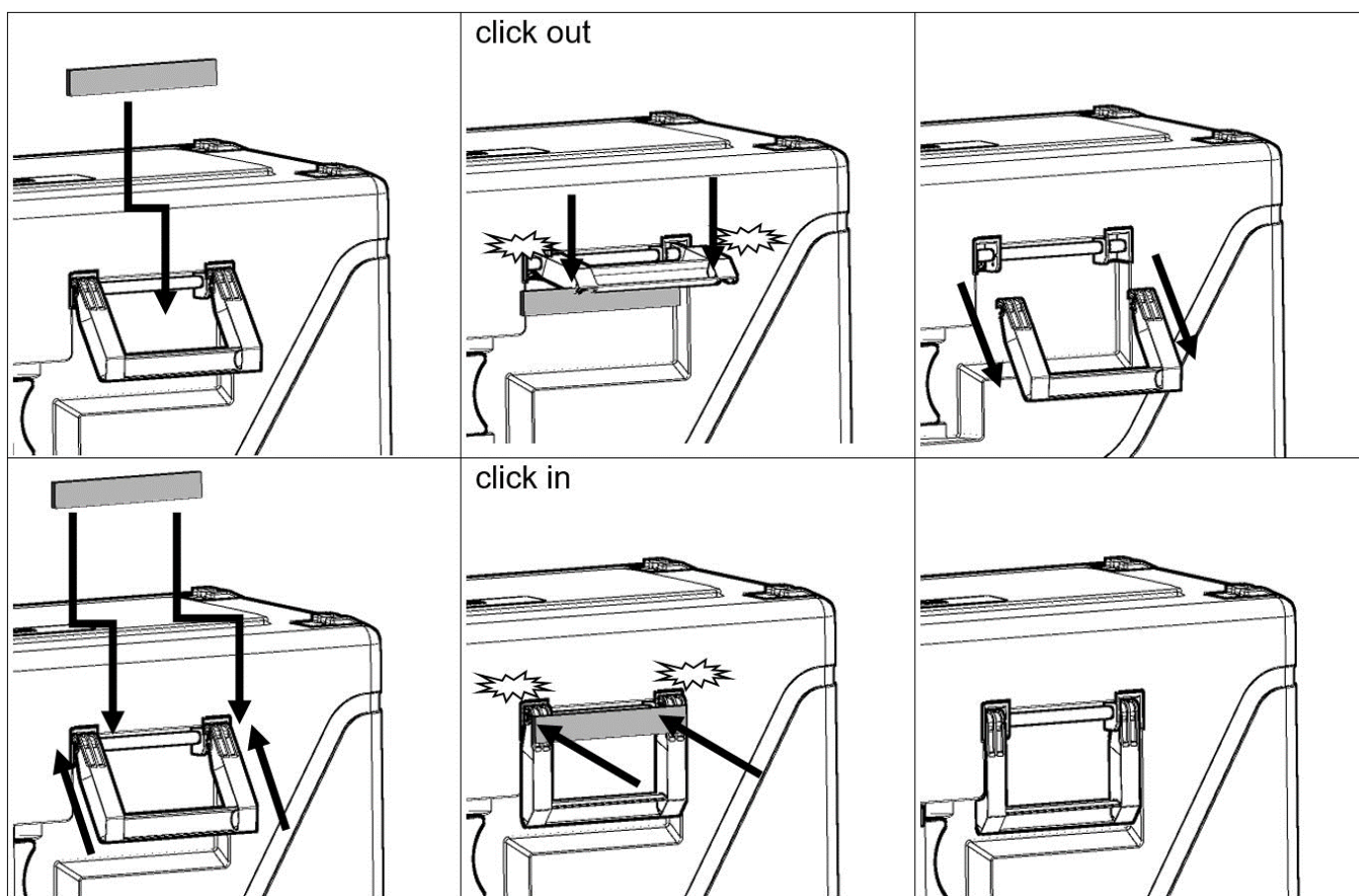
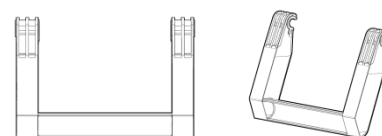
Please avoid the use of high-pressure cleaners if the working temperatures exceed +120°C.

- **Storage**

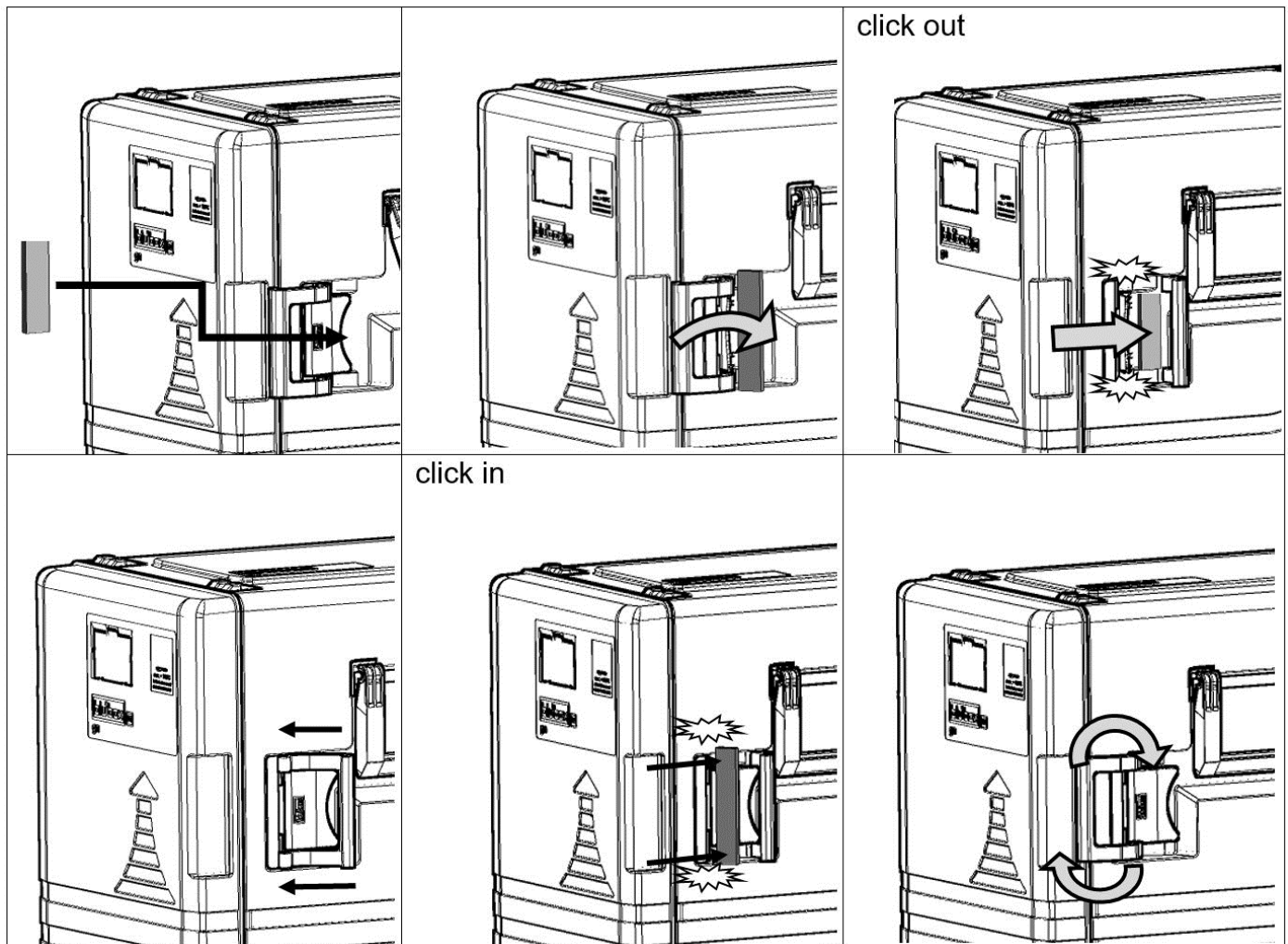
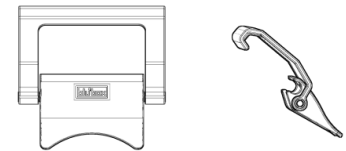
- The food transport boxes must be correctly stacked on top of each other and must be kept in clean, dry rooms.
- Ensure that the skids of the upper food transport boxes are in the guide of the lower food transport boxes.
- Please **ONLY** stack **3** food transport boxes on top of each other at the most.



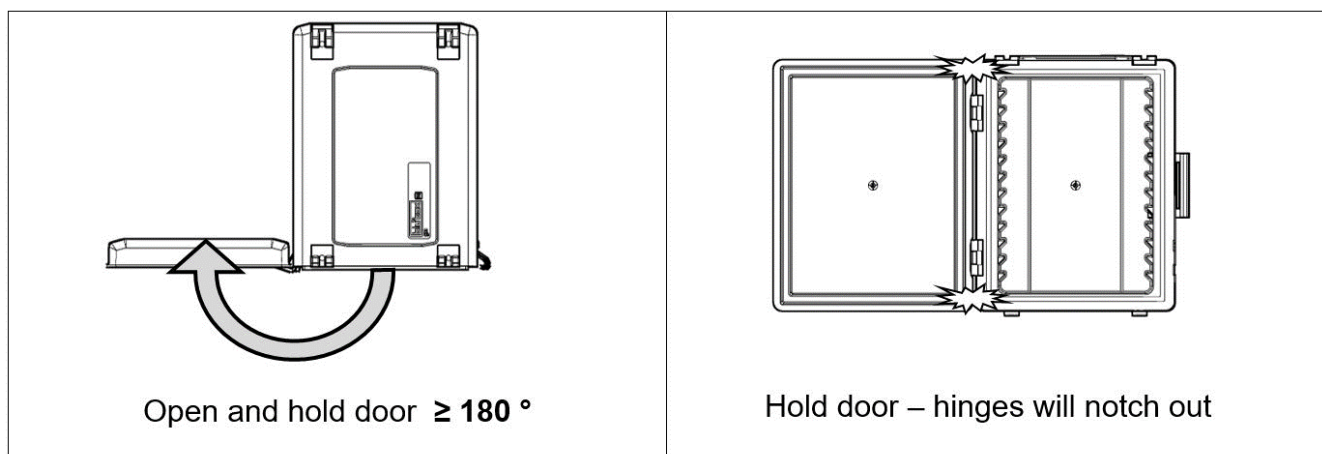
- **Disassembly and assembly handles Art.-no. 8002258**

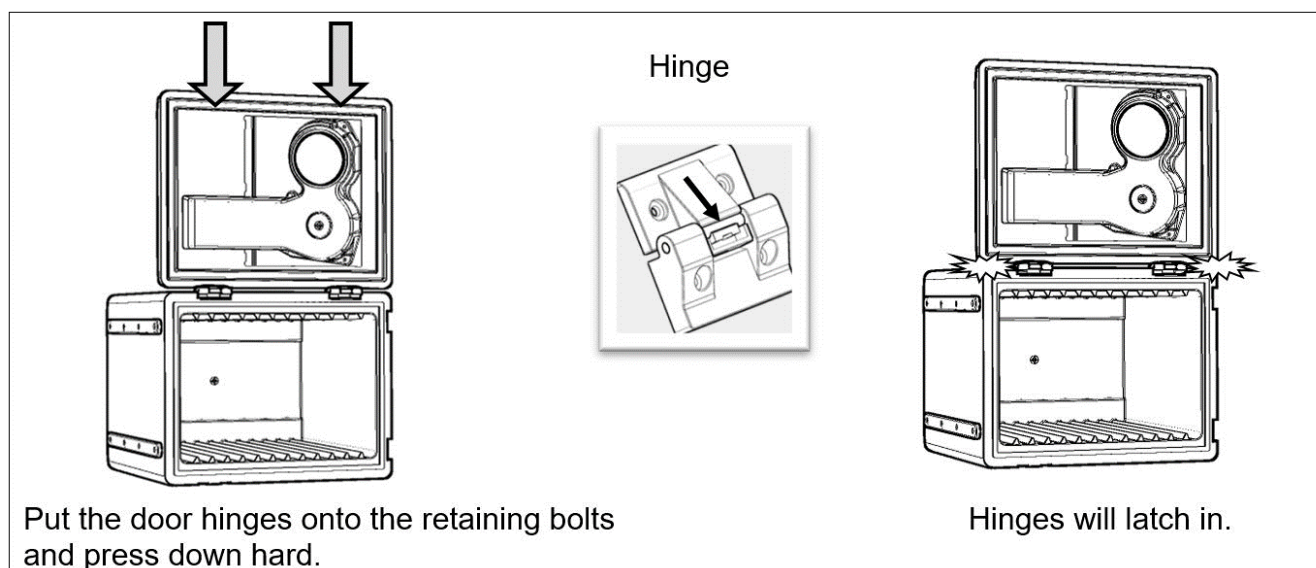


- Disassembly and assembly clip closure Art.-no. 8002255

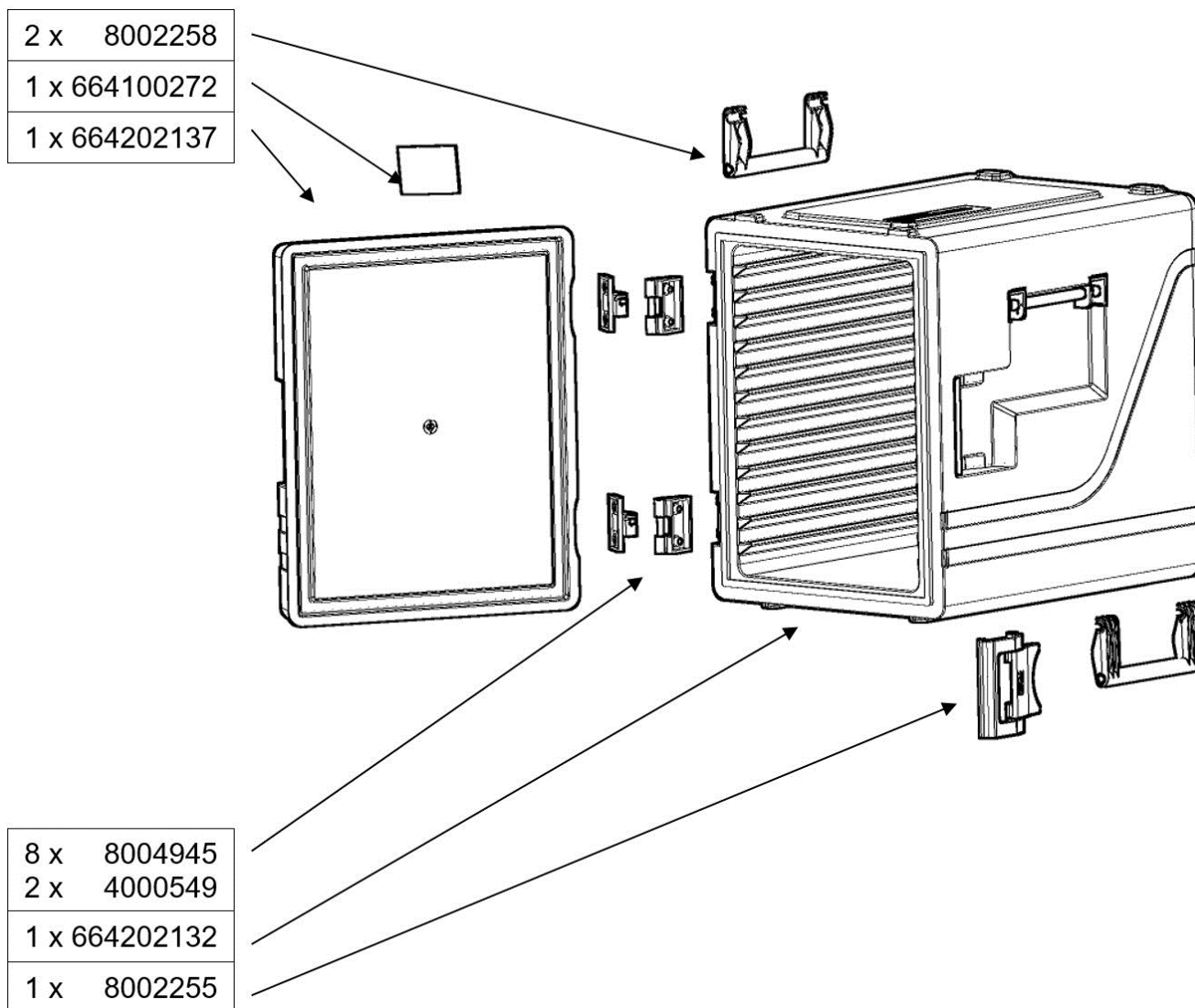


- Disassembly and assembly door Art.-no. 664202137



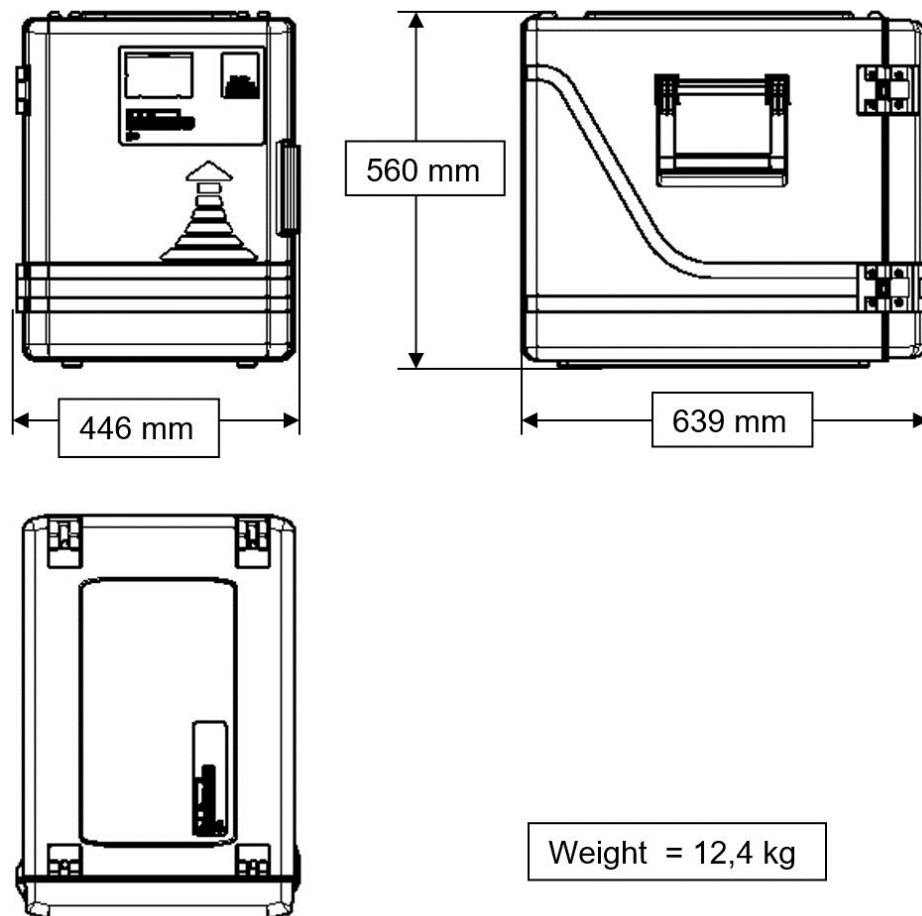


- Spare parts for Art.-no. 4000541 – pure orange



Technical data

- Main dimensions and weights



- Producer



etol Eberhard Tripp GmbH • Allerheiligenstraße 12 • 77728 Oppenau • Germany
T. + 49 (0) 7804 410 www.bluline.de - info.bluline@etol.de

Powerful products for commercial kitchens.
www.etol.de



etol Eberhard Tripp GmbH • Allerheiligenstraße 12 • 77728 Oppenau • Germany
T. +49 (0)7804 410 • www.bluline.de • info.bluline@etol.de